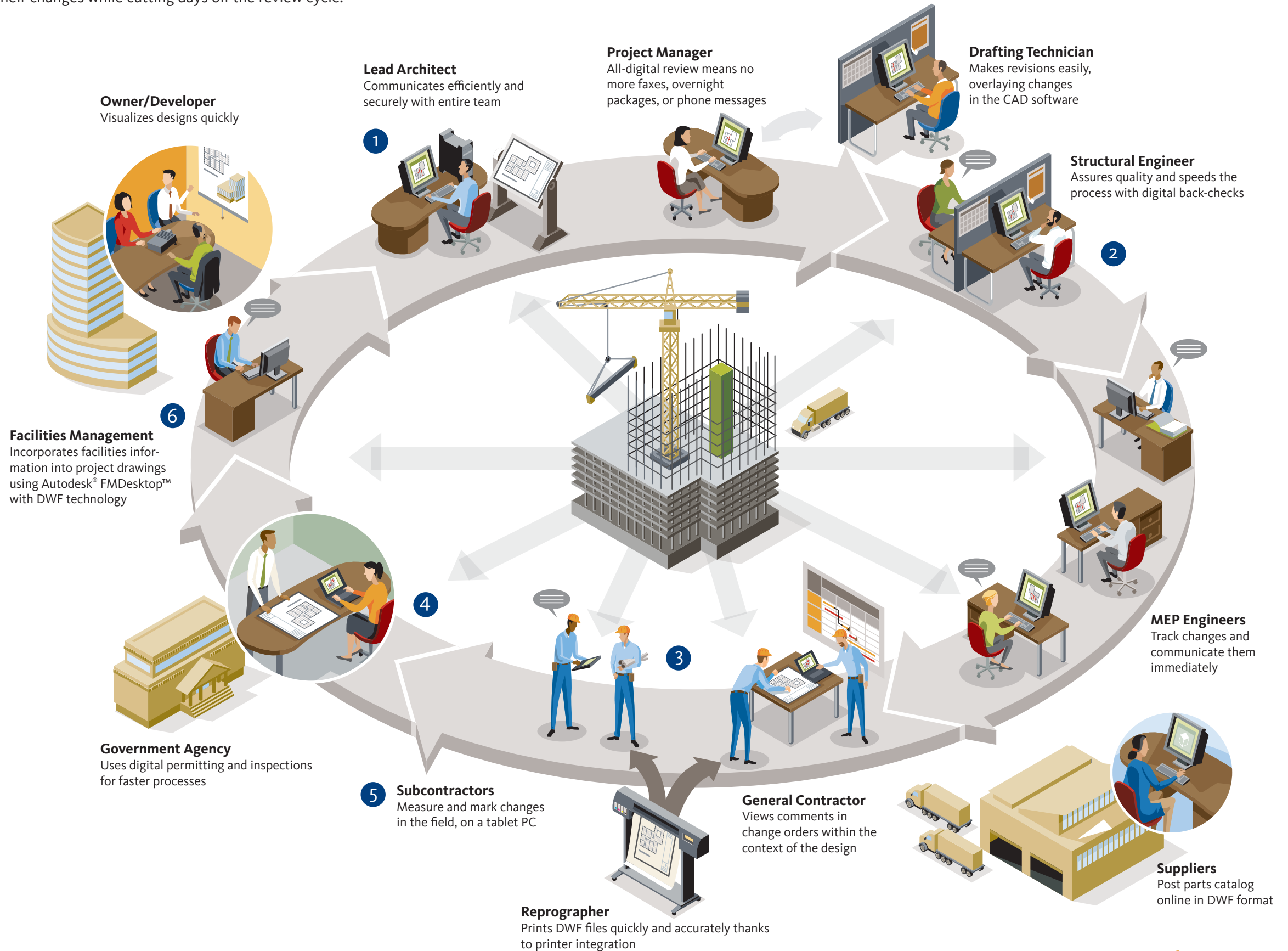


How Does Autodesk Design Review Streamline Building Projects?

Autodesk® Design Review software streamlines your design review process with custom markup and approval tools that help speed the project to completion. Now team members can accurately review 2D and 3D designs digitally, offer feedback quickly and easily, and track and round-trip their changes while cutting days off the review cycle.



- 1 Design**
Speed designs to approval and improve communication using Autodesk® Design Review software's intuitive digital review, measure, and markup tools for 2D and 3D designs. Gather client and management feedback early. Review comments digitally in AutoCAD® Architecture, AutoCAD®, or Revit®-based software, streamlining revisions.
- 2 Consultant Collaboration**
Improve collaboration with structural, MEP (mechanical, electrical, plumbing), landscape, and other engineers, and cut review cycles by up to 2-3 days using Autodesk Design Review software for internal and external reviews.
- 3 Construction Validation**
Gain insight early in the process, securely sending designs to the general contractor for "constructability" reviews. Combine all project information such as construction cost estimates and project timelines in Design Review software. In addition, Autodesk® Buzzsaw®, with DWF™ technology built in, helps expedite processes with bidding and project management tools.
- 4 Building Permitting**
Digitally automate permitting processes with city planning departments or government agencies that accept DWF-based plans, reviewing them digitally and communicating changes quickly. The results are faster permit granting processes, reduced paperwork, and improved data archiving.
- 5 Construction**
Enable on-site markups and easy digital tracking and communication of construction changes back to the lead architect. Speed access to any needed paper-based plans thanks to DWF technology integration with large-format printers. Once construction is completed, building inspections move quickly and can be signed off digitally by government agencies using Design Review markup and approval tools.
- 6 Facilities Management**
Autodesk® FMDesktop™ software uses rich DWF-based design data that turns project drawings into facilities management tools.



Autodesk, AutoCAD, Revit, Buzzsaw, DWF, and FMDesktop are registered trademarks or trademarks of Autodesk, Inc., in the USA and/or other countries. All other brand names, product names, or trademarks belong to their respective holders. Autodesk reserves the right to alter product offerings and specifications at any time without notice, and is not responsible for typographical or graphical errors that may appear in this document. © 2007 Autodesk, Inc. All rights reserved.