

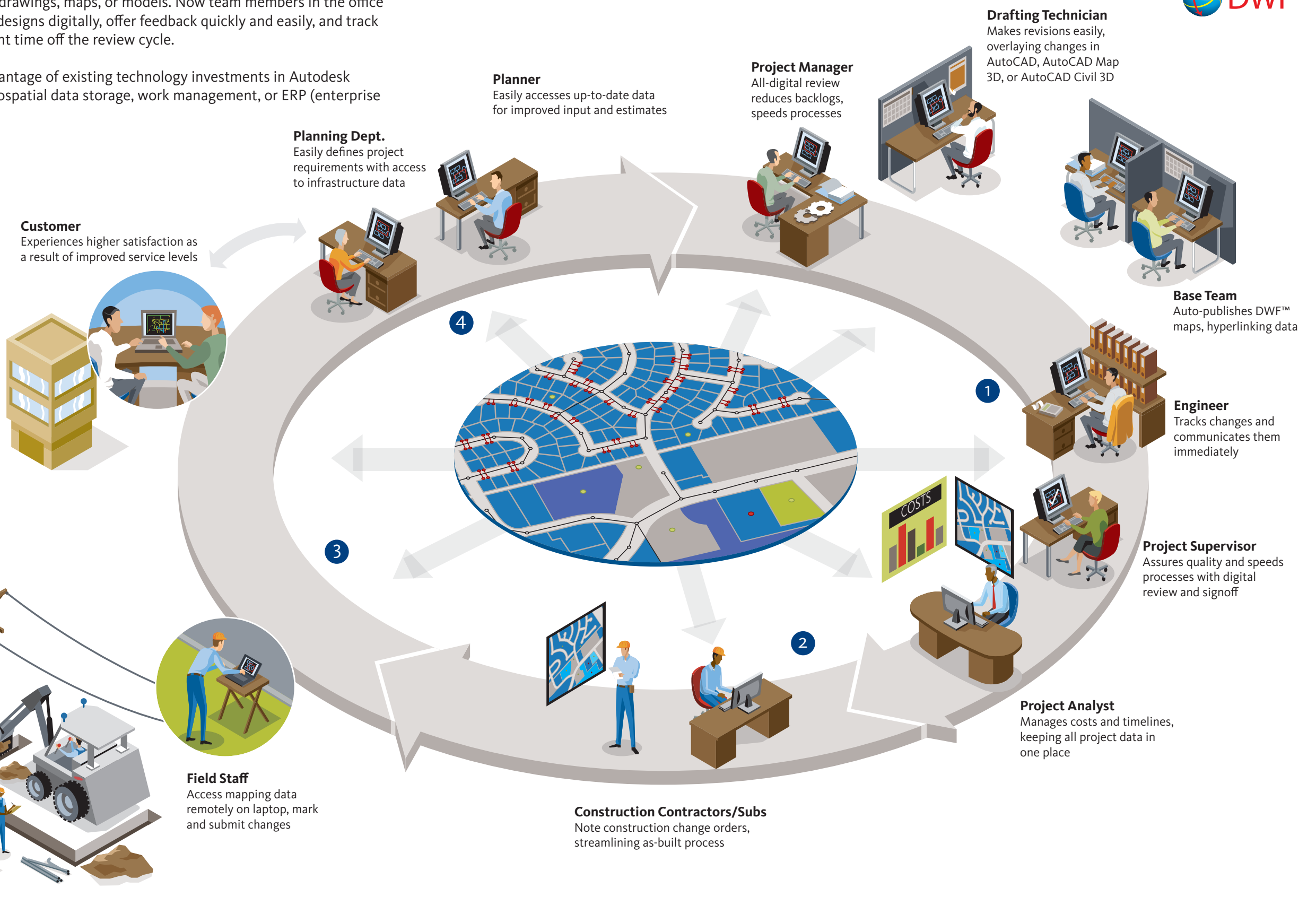
How Does Autodesk Design Review Streamline Infrastructure Projects?

Autodesk® Design Review software streamlines design review processes with custom markup and approval tools that help ensure everyone has the most up-to-date drawings, maps, or models. Now team members in the office or out in the field can accurately review 2D and 3D designs digitally, offer feedback quickly and easily, and track and round-trip their changes while cutting significant time off the review cycle.

Autodesk Design Review allows you to take full advantage of existing technology investments in Autodesk design software and third-party systems such as geospatial data storage, work management, or ERP (enterprise resource planning) to automate processes.



- 1 Drafting and Design**
Speed processes using Autodesk Design Review to digitally share and review geospatial data within your organization or with external consultants. Review and integrate changes digitally in AutoCAD® Map 3D, AutoCAD® Civil 3D®, and AutoCAD® software, streamlining revisions.
- 2 Construction**
Reduce rework and paper-based backlogs. Automatically track construction change orders in Design Review, allowing reuse of as-designed plans for as-built plans.
- 3 Maintenance and Operations**
Regularly deliver field staff up-to-date, highly accurate geospatial and system information that can be viewed in Autodesk Design Review. Redlines and annotations performed during inspection or service calls can be retrieved from the field and routed for updates.
- 4 Planning and Analysis**
Flexible technology integrates into existing systems. Increased accuracy of infrastructure data improves planning and analysis, and ultimately service levels.



Autodesk, AutoCAD, Civil 3D, and DWF are registered trademarks or trademarks of Autodesk, Inc., in the USA and/or other countries. All other brand names, product names, or trademarks belong to their respective holders. Autodesk reserves the right to alter product offerings and specifications at any time without notice, and is not responsible for typographical or graphical errors that may appear in this document. © 2007 Autodesk, Inc. All rights reserved.