

How Does Autodesk Design Review Speed Time to Market?

Autodesk® Design Review software streamlines your design review process with measure, markup, and approval tools that help speed product development to completion. Securely enable team members to accurately review 2D and 3D designs digitally, offer feedback quickly and easily, and track and round-trip their changes while cutting days off the review cycle.



1 Product Design and Engineering

Gather customer, management, and product team feedback early. Review comments digitally in Autodesk® Inventor™, AutoCAD®, AutoCAD® Mechanical, and AutoCAD® Electrical software, streamlining revisions. DWF™ technology is built into Autodesk® Productstream® software to help manage the engineering design process.

2 Manufacturing Engineering

Improve communication with suppliers and other departments by securely enabling digital reviews. Combine all project information such as quotes, timelines, and assembly information in Autodesk Design Review software. For release management, Autodesk Productstream connects and integrates product data management with back-office systems.

3 Manufacturing Production

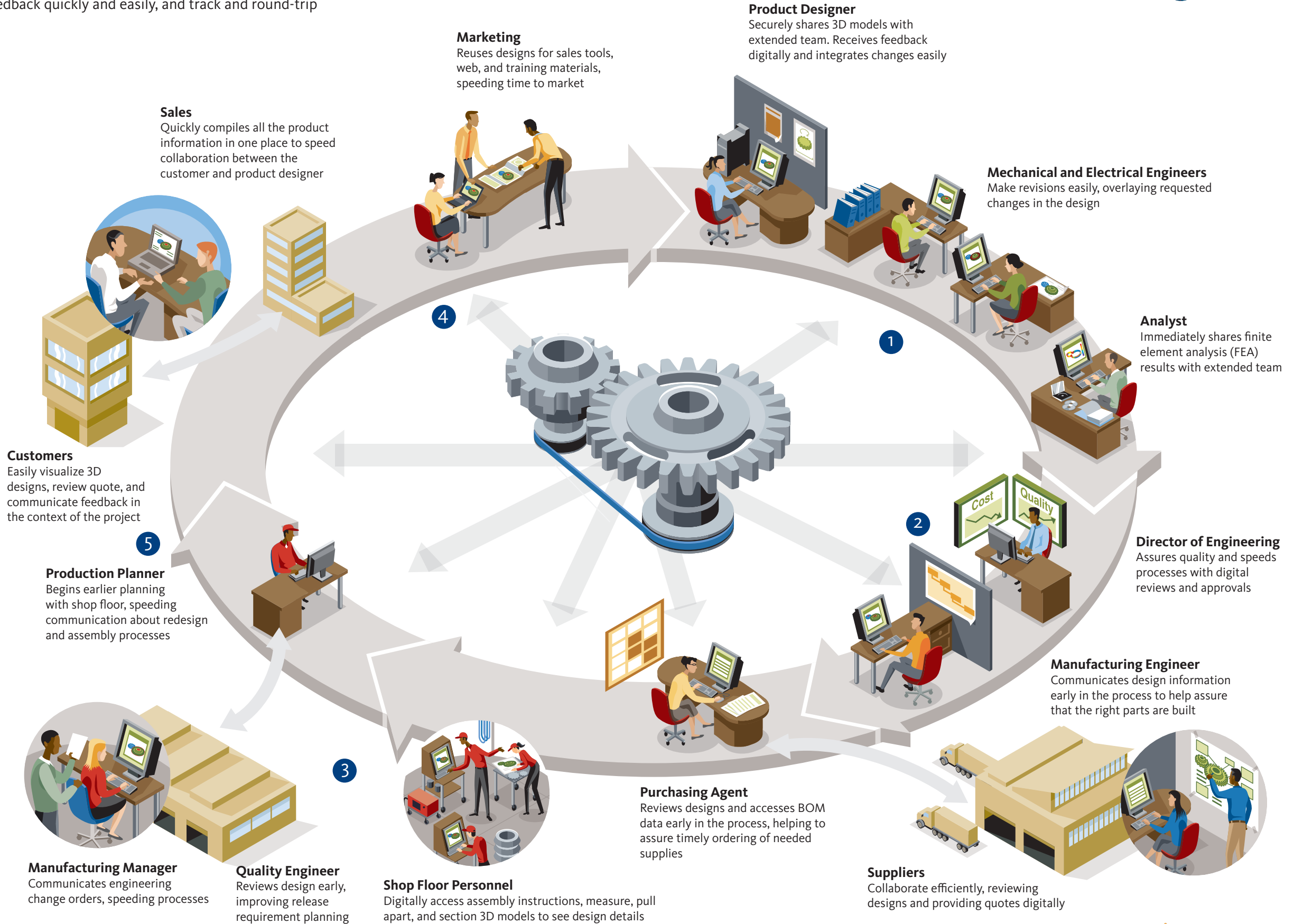
Move to paperless production, securely sharing 3D models with manufacturing, suppliers, and partners. Model representations and configurations, animations, and assembly instructions can be viewed, measured, and marked up with Autodesk Design Review. In addition, the Autodesk Streamline® service provides collaborative project management.

4 Sales and Distribution

Accelerate the ability of marketing and sales departments to communicate with customers as soon as the product is released. Leverage the same 2D or 3D design data; post compact, secure DWF files on the web; and include this data within Microsoft® Office for sales materials or other communications.

5 Maintenance and Repair

Make use of rich data sets to understand maintenance and repair needs. Quickly understand design issues by jumping from hyperlinks to product details or by viewing the full 3D model and assembly instructions.



Autodesk, AutoCAD, Autodesk Inventor, Autodesk Streamline, DWF, Inventor, and Productstream are registered trademarks or trademarks of Autodesk, Inc., in the USA and/or other countries. All other brand names, product names, or trademarks belong to their respective holders. Autodesk reserves the right to alter product offerings and specifications at any time without notice, and is not responsible for typographical or graphical errors that may appear in this document.
© 2007 Autodesk, Inc. All rights reserved.