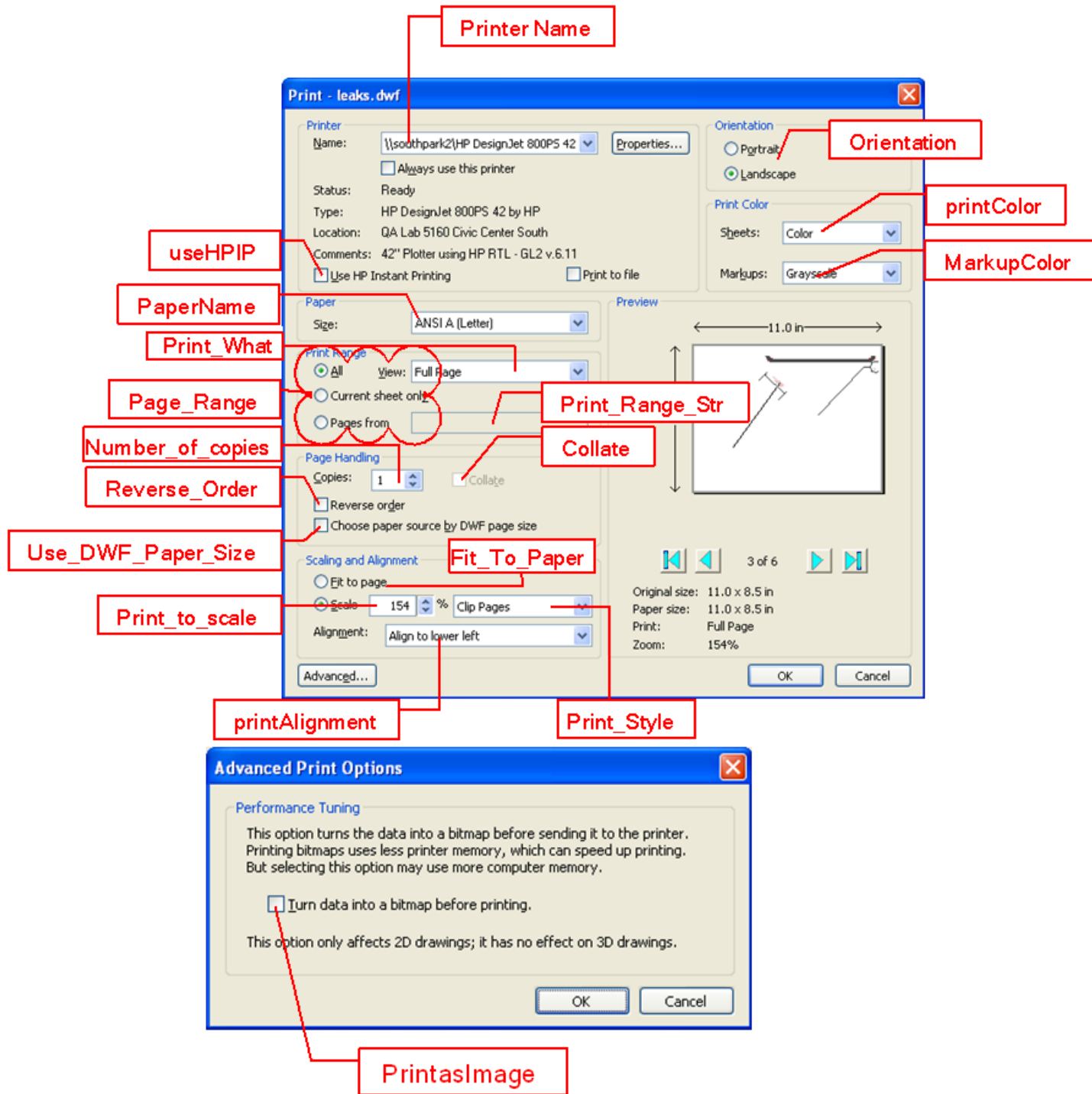
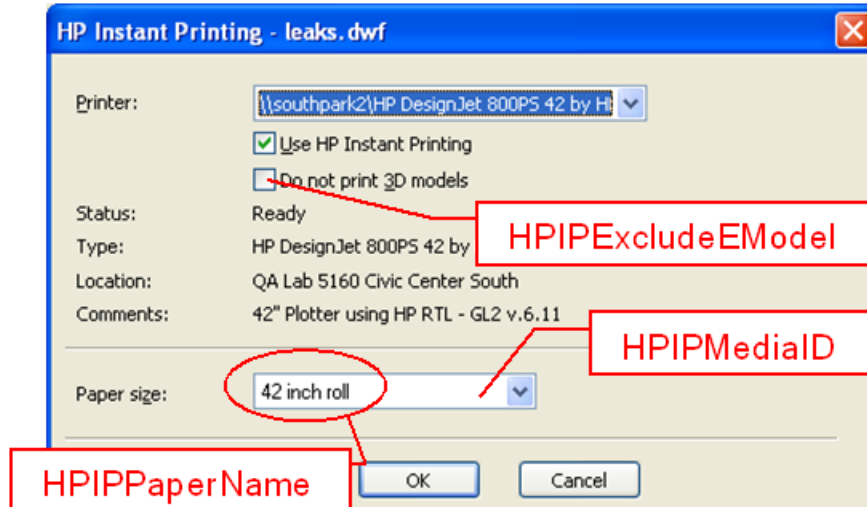


Autodesk Design Review 2010 Batch Print Parameters

This document is provided "as is" in response to users asking how to control and modify BPJ files produced by the Batch Print Wizard found in Autodesk Design Review 2010.

Parameter Identification





Batch Print Parameters Described

Below are the parameter names, descriptions, and values where applicable. (Be sure to see the “Example Code from a BPJ file” section for real samples.)

- FileName
 - DWF file: Full path of a single DWF/DWFX file.
 - Folder: Full path of a folder which contains DWF files.
- PageSize
 - 2D DWF: The paper size of this DWF file.
 - 3D DWF: "Not Applicable"
- NoOfSections
 - Section count contained in the DWF file.
- Print_to_scale
 - 2D DWF: The scaling value
 - 3D DWF: 100
- Print_Style
 - Tile Pages: 0
 - Clip Pages: 1
- Print_What
 - Full Page: 0
 - Current View: 1

Note: Batch printing only supports “Full page” printing.
- Fit_To_Paper
 - “Fit to page” option in print setting window
- Paper_Size
 - The value mapped to the dimension in real world. For example value “1” means DMPAPER_LETTER whose size is “8.5 X 11 inch” in real world.
- Paper_Size_Width

- Paper_Size_Height
 - Either for custom paper sizes or for devices such as dot-matrix printers that can print on a page of arbitrary length. These values, along with all other values in this structure that specify a physical length, are in tenths of a millimeter.
- Orientation
 - Portrait: 1
 - Landscape: 2
- Number_of_copies
 - The number of copies printed if the device supports multiple-page copies.
 - Note: some printers do not support multi-copy printing so even though this value is bigger than 1 the print output will still be only one copy.
- PrinterName
 - The Printer to which the print result should be output
- Page_Range
 - All: 0
 - Current Sheet Only: 1
 - Pages From: 2
- Print_Range_Str
 - Only when “Pages From” is selected, this value can be used.
 - The customized pages to be printed.
- Reverse_Order
 - Print order from first page to last page: 0
 - Print order from last page to first page: 1
- Collate
 - Specifies whether collation should be used when printing multiple copies.
 - Collate when printing multiple copies: 1
 - Do not collate when printing multiple copies: 0
- printColor
 - The geometry color mode for printing
 - Color: 0
 - Black and White: 1
 - Grayscale: 2
- MarkupColor
 - The markup color mode for printing
 - Color: 0
 - Black and White: 1
 - Grayscale: 2

- **printAlignment**
 - Only when user selected “Clip pages” this option can be used.
 - Center on paper: 0
 - Center in printer margins: 1
 - Align to upper left: 2
 - Align to upper right: 3
 - Align to lower left: 4
 - Align to lower right: 5
- **Use_DWF_Paper_Size**
 - Specifies whether print paper size is based on the DWF paper/page size.
 - Use DWF paper size: 1
 - Use printer paper size: 0
- **PrintasImage**
 - Specifies whether print result is produced as an image.
- **PaperName**
 - The printer paper name such as “Letter”, “Legal”, “A4”, etc. (See the examples at the end of this document.)
- **useHPIP**
 - If current printer supports HPIP functionality, user can select this option to print.
- **HPIPMediaID**
 - Similar printer paper size ID.
 - Media can be roll and paper.
 - If user does not select HPIP functionality this value should be “-1” which means an invalid media ID.
- **HPIPExcludeEModel**
 - Specifies whether 3D models will also be printed with HPIP if user selects “Use HPIP” option.
- **HPIPPaperName**
 - The media name in HPIP mode.
 - Similar with the “PaperName” described above.

Example Code from a BPJ file

```
<configuration_file>
  <DWF_File FileName="C:\Documents and Settings\user\Desktop\simple\Simple_2D.dwf"
    PageSize="8.5 x 11.0 in"
    NoOfSections="1"
    Print_to_scale="150"
    Print_Style="1"
    Print_What="0"
    Fit_To_Paper="0"
    Paper_Size="1"
    Paper_Size_Width="2159"
    Paper_Size_Height="2794"
    Orientation="2"
    Number_of_copies="1"
    PrinterName="Adobe PDF"
    Page_Range="0"
    Print_Range_Str=""
    Reverse_Order="0"
    Collate="0"
    printColor="0"
    MarkupColor="0"
    printAlignment="2"
    Use_DWF_Paper_Size="0"
    PrintasImage="0"
    PaperName="Letter"
    useHPIP="0"
    HPIPMediaID="-1"
    HPIPExcludeEModel="-1"
    HPIPPaperName=""/>
  <DWF_File FileName="C:\Documents and Settings\user\Desktop\simple\test2.dwf"
    PageSize="8.5 x 11.0 in"
    NoOfSections="1"
    Print_to_scale="74"
    Print_Style="0"
    Print_What="0"
    Fit_To_Paper="-1"
    Paper_Size="5"
    Paper_Size_Width="2159"
    Paper_Size_Height="3556"
    Orientation="2"
    Number_of_copies="1"
    PrinterName="Send To OneNote 2007"
    Page_Range="0"
    Print_Range_Str=""
    Reverse_Order="0"
    Collate="0"
    printColor="0"
```

```
MarkupColor="0"
printAlignment="3"
Use_DWF_Paper_Size="-1"
PrintasImage="-1"
PaperName="Legal"
useHPIP="0"
HPIPMediaID="-1"
HPIPExcludeEModel="-1"
HPIPPaperName=""/>
<DWF_File FileName="C:\Documents and Settings\user\Desktop\Small\Flower.dwf"
  PageSize="210.0 x 148.0 mm"
  NoOfSections="2"
  Print_to_scale="100"
  Print_Style="0"
  Print_What="0"
  Fit_To_Paper="-1"
  Paper_Size="1"
  Paper_Size_Width="2159"
  Paper_Size_Height="2794"
  Orientation="2"
  Number_of_copies="1"
  PrinterName="\\networklocation\HP DesignJet 800PS 42 by HP"
  Page_Range="0"
  Print_Range_Str=""
  Reverse_Order="0"
  Collate="0"
  printColor="0"
  MarkupColor="0"
  printAlignment="3"
  Use_DWF_Paper_Size="0"
  PrintasImage="0"
  PaperName="ANSI A (Letter)"
  useHPIP="-1"
  HPIPMediaID="5"
  HPIPExcludeEModel="-1"
  HPIPPaperName="A0 roll"/>
<DWF_File FileName="C:\Documents and Settings\user\Desktop\Small\Part25.dwf"
  PageSize="Not Applicable"
  NoOfSections="1"
  Print_to_scale="100"
  Print_Style="0"
  Print_What="0"
  Fit_To_Paper="-1"
  Paper_Size="9"
  Paper_Size_Width="2100"
  Paper_Size_Height="2970"
  Orientation="2"
  Number_of_copies="1"
```

```
PrinterName="Microsoft XPS Document Writer"
Page_Range="0"
Print_Range_Str=""
Reverse_Order="0"
Collate="0"
printColor="1"
MarkupColor="0"
printAlignment="3"
Use_DWF_Paper_Size="0"
PrintasImage="0"
PaperName="A4"
useHPIP="0"
HPIPMediaID="-1"
HPIPExcludeEModel="-1"
HPIPPaperName=""/>
<DWF_File FileName="C:\Documents and Settings\user\Desktop\simple.dwf"
  PageSize=""
  NoOfSections="4"
  Print_to_scale="24"
  Print_Style="0"
  Print_What="0"
  Fit_To_Paper="-1"
  Paper_Size="9"
  Paper_Size_Width="2100"
  Paper_Size_Height="2970"
  Orientation="2"
  Number_of_copies="1"
  PrinterName="Send To OneNote 2007"
  Page_Range="1"
  Print_Range_Str=""
  Reverse_Order="0"
  Collate="0"
  printColor="0"
  MarkupColor="0"
  printAlignment="3"
  Use_DWF_Paper_Size="0"
  PrintasImage="0"
  PaperName="A4"
  useHPIP="0"
  HPIPMediaID="-1"
  HPIPExcludeEModel="-1"
  HPIPPaperName=""/>
</configuration_file>
```

Q & A

Q. Are the parameters case-sensitive? For example, is "Fit_To_Paper" the same as "Fit_to_paper"?

A. BPJ script parameters are not case-sensitive. "Fit_TO_Paper" is equal to "Fit_to_paper"

Q. Re: parameter usage method, are the parameters applied to all files within the BPJ file?

A. If the user selected a folder to execute batch printing, then parameters apply to all the DWF/DWFX files within the folder. If the user selected a DWF/DWFX file to execute batch printing then parameters only apply to this file. As a whole, any selected item will map to a group of parameters.

Q. In a batch print job, if a file fails to print, does the entire batch print fail or is the problematic file ignored?

A. If one file failed during printing, it's ignored, an error is added to the log, and the job continues printing.

Can one of the parameters inside the .bpj file itself limit the number of pages that print for each drawing?

We do not support print range settings for batch print. All sections of a file will be printed by batch print.

Q. What's the difference between "Paper_Size" and "HPIPMediaID"?

A. "Paper_Size" is a MACRO value which maps to a real physical dimension; the "HPIPMediaID" is the index.

Constant	Value	Meaning
DMPAPER_LETTER	1	US Letter 8 1/2 x 11 in
DMPAPER_LETTERSMALL	2	US Letter Small 8 1/2 x 11 in
DMPAPER_TABLOID	3	US Tabloid 11 x 17 in
DMPAPER_LEDGER	4	US Ledger 17 x 11 in
DMPAPER_LEGAL	5	US Legal 8 1/2 x 14 in
DMPAPER_STATEMENT	6	US Statement 5 1/2 x 8 1/2 in
DMPAPER_EXECUTIVE	7	US Executive 7 1/4 x 10 1/2 in
DMPAPER_A3	8	A3 297 x 420 mm
DMPAPER_A4	9	A4 210 x 297 mm

Paper_Size

